

Josts

JODOCK

Hydraulic Dock Leveler



- Solution for continuous movement between loading dock and truck bed.
- Available in two capacities – light duty and heavy duty.
- Automatic sequential operation.
- Enhanced safety during power failure.

The Josts Dock Levelers DL5 and DL10 have been designed to provide a robust bridge to cover the gap between fixed dock height and variable truck bed height for safe and efficient movement of equipment and materials between the vehicle and loading / unloading dock.

Top Platform

The ramp is made of checkered plate with strong beams as main support members. Cross bracing by angles and channels connects all beams to each other and create a composite, highly rigid frame.

Hinges

The hinges are made of alloy steel toughened pins which are ultra-sonically tested and chrome-plated. Self-lubricated bushes assure

smooth and free movement without the requirement of external lubrication.

Hydraulics

Specifically designed hydraulic power pack ensures smooth and jerk free ramp and lip movement. Once the lip is placed on the bed of the vehicle, the ramp automatically adjusts itself to the varying height of the vehicle bed during loading/unloading operation. Oil-level indicator, drain plug and relief valve in the hydraulic circuit enhances the safety and facilitates easy maintenance.

Hydraulic Cylinders

Specially designed hydraulic cylinder with honed cylinder tubes, hard chrome plated piston rods and high quality seals ensure long trouble free life of the equipment.

Operation and Control

The system is switched on by MCB switch. The raising of ramp and opening of lip is achieved by continuous pressing of PUSH button which maintains the hydraulic pump in running condition. The ramp is held in its position by switching off the MCB. After positioning the vehicle, the MCB switch is again switched on to make the ramp come down until the lip rests on the vehicle bed.. After loading/unloading of vehicle, the same sequence of operations ensures raising and lowering of ramp to its "PARK" position.

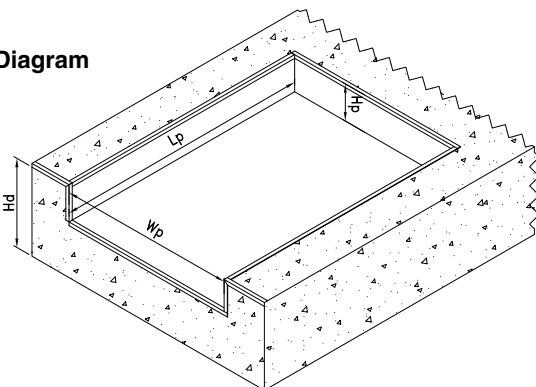
| | | | Model 1 DL 5 | Model 2 DL 10 |
|------------------------|---------------|---------|-----------------|------------------|
| Capacity : | Static Load | (kg) | 3000 | 6000 |
| | Dynamic Load | (kg) | 5000 | 10000 |
| Working Rang : | Above | (mm) a | 450 | 450 |
| | Below | (mm) b | 200 | 200 |
| Dimensions | | | | |
| Platform Size : | Length | (mm) Lr | 2750 | 2750 |
| | Width | (mm) Wr | 1800 | 2000 |
| | Lip Extension | (mm) Le | 400 | 400 |
| Pit Size : | Length | (mm) Lp | 2820 | 2820 |
| | Width | (mm) Wp | 1860 | 2060 |
| | Depth | (mm) Hp | 610 | 610 |

*Capacity includes weight of the vehicle and material.

Dock Leveler facilitates:

- Bridging the gap between vehicle bed and dock with ramp and lip combination.
- Accommodation of variety of trucks and trailers expected at dock by providing wide operating range.
- Automatic sequential operation of ramp and lip movement with simple push button operation.
- Easy maintenance.
- Loading and unloading of containers directly from dock with different types of material handling equipments.

Pit Diagram



DOCKLEVELER PIT DETAIL

Dock height depends on maximum truck bed height
(Max. Truck bed height - 450mm)
Recommended dock height (Hd = 1200mm)
(Suitable upto maximum truck bed height of 1650mm)

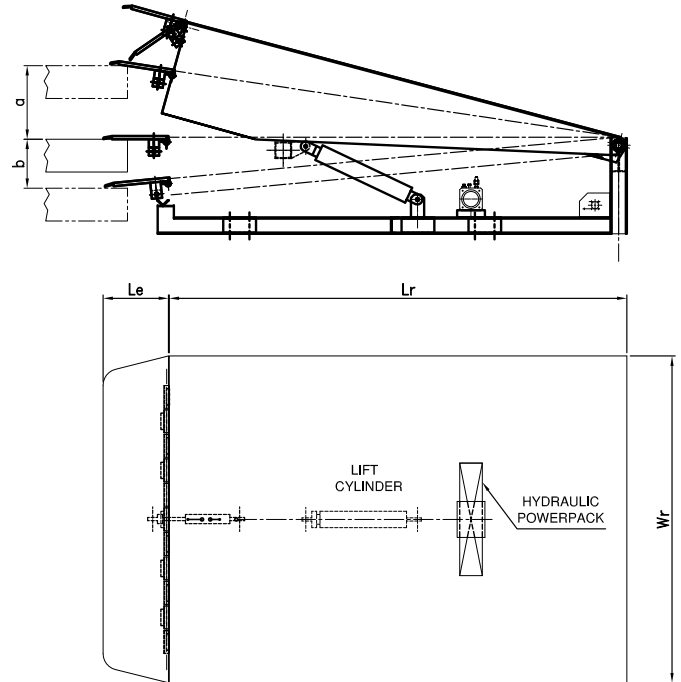
Manufactured by :



Jost's Engineering Company Limited

C-7, Wagle Industrial Estate, Road No. 12, Thane - 400 604, Tel. :+91 22 2582 1727, 2582 1746, 2582 1748, 2582 2083,
Fax:+91 22 2582 3478, E-mail: infomhe@josts.in, Website: www.josts.com

Bengaluru: 080-22263707, **Vadodara:** 0265-2351642, **Chennai:** 044-26268536, **Kolkata:** 033-22429510,
New Delhi: 011-45676000, **Pune:** 020-25436601, **Secunderabad:** 040-27714934



Right to make changes and technical improvement reserved.

Features:

- **Platform Structure:**
 - Sturdy, warp free, balanced structure.
 - Non-reverse folding robust hinges.
 - Automatic folding of lip by double acting cylinder.
 - Checkered plate for proper grip.
- **Control Features:**
 - Power saver control with motor "ON" only for lifting.
 - Compact reliable hydraulic power pack ensures safe, smooth and jerk free operation.
 - Sequential valve ensures proper sequence of operation.
- **Control Panel:**
 - Simple single push button control with three phase indicators.
 - "MCB" facilitates isolation for easy maintenance of control panel.
 - Reliable and high quality contactors and transformers.
- **Optional Features:**
 - Rubber dampers for vehicle back up.
 - Twin cylinder model available on request.
 - Operation with single phase motor on request.
 - Customised platform (If feasible) on request.
- **Safety :**
 - Stay put condition in case of power failure.
 - Automatic leveling ensured.
 - Overload protection by relief valve.
 - Lip locator ensures leveled dock area.
 - Single continuous hinge rod prevents misalignment during operation.