

# TUSKER

(Tow Trucks)

Capacity 8000 / 10000 Kg.



- MOSFET stepless speed controller and heavy duty contactors.
- Towing capacity up to 10000 kg.
- Pollution free and user friendly.
- Easy and comfortable to ride.
- Effortless steering operation.

The Jost's electric tow truck is a four wheel battery operated material handling equipment used for towing load up to 10,000 kg over long distances on asphalt or smooth concrete road. It is ideal for use in inter-plant transportation, factories, airports, railways and large processing plants. Jost's leads the way with tough, dependable industrial towing trucks.

**Operators Area :** Ergonomically convenient operator's area provides operators comfort. All controls are located at easily accessible reach with ample leg room. Adjustable seat (Optional) further enhances operator's comfort.

**Drive :** The vehicle is driven by an SEPEX drive motor / AC motor of suitable rating with class 'F' insulation powered by suitable battery capacity. Efficient power transmission to rear wheels is through noise free dual stage gear reduction unit and differential mechanism.

**Drive Control :** Microprocessor based MOSFET controller enables smooth step less acceleration, variable speed control and precise inching movement. The controller comes with self diagnostic feature which monitors the control system for fault diagnostic purposes. The controller also enables regenerative braking thereby increasing the battery utilisation period.

**Brakes :** Automatic braking is enabled by regenerative braking when the operator removes his foot from the acceleration pedal. Service braking is ensured by self adjusting brakes with heavy duty brake linings and is effected by hydraulic braking actuated by ergonomically located foot pedal. Parking brake is through expandable shoes operated by cable connected to a hand operated lever located on operators left hand side.

**Power Steering :** Hydrostatic power steering system with automotive type tilt able steering column enables virtually fatigue free operation while maneuvering in confined area. The hydraulic steering unit, controls the steering action hydraulically through the steering cylinder mounted on the steer axle. The steering column is operated by 16" hand wheel provided with foam grip for operator's comfort.

**Steer Axle :** Articulating hydraulic steer axle of robust construction ensures accurate steering geometry, minimum tyre wear and sharp angle steering for greater maneuverability. It comprises of hardened steel bushing for the center pivot for prolonged trouble free life and integrated balanced, hydraulic cylinder located at convenient accessible position for easy maintenance.

**Wheels :** Solid cushion tyres with split-rim construction are provided at the front and rear for operating over a variety of surface conditions. Solid cushion tyre provides adequate resilience while operating over a variety of surfaces and overcoming the high reactive forces. Split-rim construction enables easy maintenance and replacement. The larger size tyres ensure better stability and carrying capacity, higher ground clearance and increased life. Non-marking tyres can also be provided as an option.

**Chassis and Canopy :** Chassis is fabricated from heavy steel plates for excellent rigidity and strength. Battery compartment with cover is integrated with chassis and supports the operator's seat without compromising the accessibility of battery for routine maintenance. A hand lever operated self return towing arrangement is provided at the rear of the truck which can be operated by the operator without dismounting from the seat. The chassis is adequately balanced for towing the specified loads without any problem. The canopy is made of hollow section for rigidity and protects the operator against the hazards of falling objects.

**Instrumentation and control :** The hour meter and battery discharge indicators are provided as a standard on the front panel. The On-Off switch, forward reverse direction switch are located within easy reach.

**Accessories :** The truck comes with head / tail / brake / side indicator lights, reverse light / horn, and rear view mirror as standard. Revolving lights can also be supplied as an option.

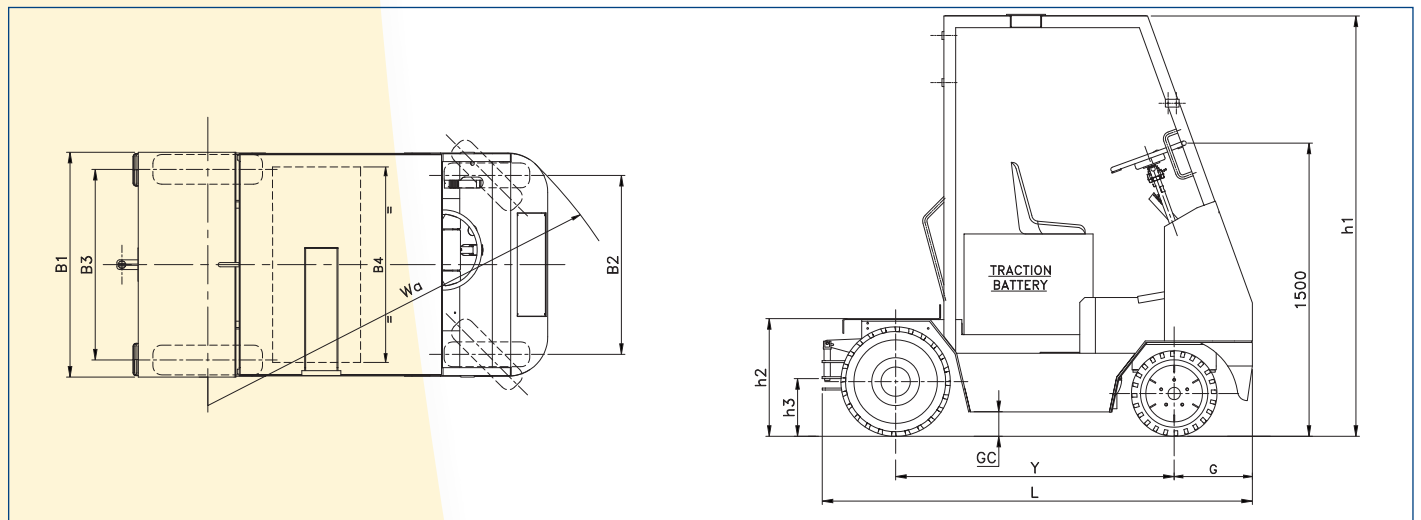
**Battery :** The vehicle is supplied with suitable traction battery with lead acid cells and adequate capacity rating as standard for non intensive application. Optional higher capacity rating batteries can also be provided for more intensive applications.

**Charger :** Microprocessor based charger of suitable ratings can be supplied, depending on the battery selection.

### Performance Data

			Tow Trucks with Platform				
			JETW – 80		JETW – 100		
Identification	Model		Sepex		AC		
	Controller		Seated		Seated		
	Type of Operation		8000		10000		
	Towing Capacity *	Kg	1625		1625		
	Wheelbase	Y = mm	3000		4050		
Weight	Service weight incl. battery (approx.)	Kg	650		990		
	Battery weight (approx.)	Kg	Solid cushion		Solid cushion		
Chassis	Tyres		Ø460 x 127W		Ø460 x 127W		
	Tyre size, front	mm	Ø580 x 172W		Ø580 x 172W		
	Tyre size, rear	mm	2 x 2		2 x 2		
	Wheels, number front / rear (x = driven wheels)		915		915		
	Track width, front	B2 = mm	975		975		
	Track width, rear	B3 = mm	2400		2400		
Basic Dimension	Overall height	h1 = mm	1000		1000		
	Overall length	L = mm	1150		1150		
	Battery compartment width	B4 = mm	125		125		
	Overall width	B1 = mm	2400		2400		
	Ground clearance	GC = mm	500 x 1150		500 x 1150		
	Turning radius	Wa = mm	610 / 300		690 / 300		
	Platform size	PL x PW = mm	400		400		
	Platform / Towing height	h2 / h3 = mm	9		10		
	Front over hang	G = mm	11		12		
Performance	Travel speed # :	Laden	Km / hr	5	5	11	12
		Unladen	Km / hr	10		10	
	Gradient performance :	Laden	Max. %	9		9	
		Unladen	Max. %	10		10	
	Service brake		Foot Operated	Hydraulic		Hydraulic	
	Parking brake			Hand operated		Hand operated	
Power	Drive motor rating S2 60 min.	Kw	8.0	6.5	8.5	7.0	
	Battery voltage, nominal capacity	V / Ah	48 / 375		72 / 385		
	Battery charger ( 3 Phase - Automatic)	V / A	48 / 50		72 / 50		
Others	Type of drive control		Sepex	AC	Sepex	AC	
	Sound level	db ( A)	75	70	75	70	

1- \* = Towing capacity includes trolley weight plus payload weight. 2- # = Max. speed can be achieved with full battery charge.



• For any special requirement, please contact Jost's marketing department. • Dimensions indicated here are subject to variations of ± 20mm and performance within ± 10%. • Right to make changes and technical improvement reserved.

### Jost's Engineering Company Limited

C-7 Wagle Industrial Estate, Road No. 12, Thane - 400 604. Maharashtra. INDIA.  
T.: +91.22.6117 4000 / 2582 1727 F.: +91.22.6117 4020 E.: infomhe@josts.in

Bengaluru : +91.80.2226 3707 / 22263708 Chennai : +91.44. 2626 8536 / 2628 8407

Delhi : +91.11.4567 6000 / 14 Kolkata : +91.33.2242 9510 / 4008 1242 Pune : +91.20.2543 4350 / 90

Secunderabad : +91.40.2771 4934 / 44 / 54 Vadodara : +91.265.2351 642



SINCE 1907